



"TRUMPF toolcraft Nadcap ...
...
...
..."

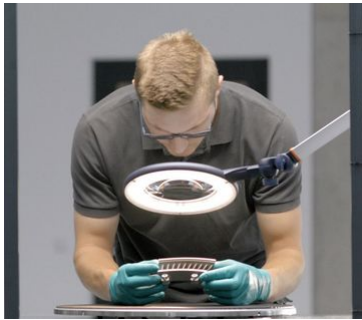
CHRISTOPH HAUCK
TOOLCRAFT



... Nadcap ... TRUMPF toolcraft " ...
...
Nadcap ... TRUMPF ...
toolcraft TRUMPF ...
... TRUMPF ...

Toolcraft ... Nadcap ...
... TRUMPF ... LMF ...
TruPrint ...
toolcraft ...
... toolcraft Nadcap ...

Toolcraft 3D ...
Nadcap ... TRUMPF toolcraft ...





TruPrint 3000

TruPrint 3000 3D printing machine. It is a high-precision, industrial-grade 3D printer designed for manufacturing complex, high-strength parts. It features a large build volume and is capable of printing a wide range of materials, including titanium, aluminum, and stainless steel. The machine is known for its reliability and consistent performance, making it a popular choice for aerospace and automotive applications.



[Zum Produkt](#)



TruPrint TRUMPF

TRUMPF 3D printing machine. This machine is designed for high-precision manufacturing of complex parts. It features a large build volume and is capable of printing a wide range of materials, including titanium, aluminum, and stainless steel. The machine is known for its reliability and consistent performance, making it a popular choice for aerospace and automotive applications.



[Zum Produkt](#)



TruLaser Cell 3000

TruLaser Cell 3000 laser cutting machine. This machine is designed for high-precision laser cutting of metal sheets. It features a large build volume and is capable of cutting a wide range of materials, including stainless steel, aluminum, and titanium. The machine is known for its reliability and consistent performance, making it a popular choice for aerospace and automotive applications.



[Zum Produkt](#)



TruMark Station 7000

TruMark Station 7000 machine tool. This machine is designed for high-precision machining of metal parts. It features a large build volume and is capable of machining a wide range of materials, including stainless steel, aluminum, and titanium. The machine is known for its reliability and consistent performance, making it a popular choice for aerospace and automotive applications.



[Zum Produkt](#)

